

**State of Wyoming Corner Record**

(In compliance with the CORNER PERPETUATION AND FILING ACT, Wyoming Statutes, 1977, Section 36-11-101, et. seq., and the Rules and Regulations of the Board of Registration for Professional Engineers and Professional Land Surveyors)

Reverse side of this form may be used if more space is needed.

Record of original survey and citation of source of historical information (if corner is lost or obliterated). Description of corner monumentation evidence found and/or monument and accessories established to perpetuate the location of this corner. Sketch of relative location of monument, accessories, and reference points with course and distance to adjacent corner(s) (if determined in this survey). Method and rationale for reestablishment of lost or obliterated corner.

G.L.O. Notes: U.S. Deputy Surveyor, John B. Thomas, October, 1870; 80.00 Chains... Set a Limestone 20 x 15 x 5 for corner common to Sec. 24-25-19-30.

Found: Nothing.

Set: At the latitudinal position of a fence line west that is supported by found existing original monuments as being an old fence line memorializing the original sectionlines, and the longitudinal position of the centerline of Laramie County Road No. 142, surveyed May 29, 1928 (See Laramie County Engineers office survey records, Book 23, Page 58). I set a No. 5 x 24" rebar with marked 2" aluminum cap, 0.5' below graded gravel surface of Laramie County Road No. 142.

See back of this sheet for ties to adjacent monuments.

Aluminum Cap Markings  
T.15N.  
R S 24 | S 19 R  
64 S 25 | S 30 63  
W 1994 W  
PLS 2927

From the corner point @ 45.15' west, I set a p.k nail in the top of a fence post and at 30.72' northeasterly, I set a p.k in the south face of wood fence post.

200703  
LARAMIE COUNTY CLERK  
CHEYENNE, WY.  
97 APR 7 PM 4 40

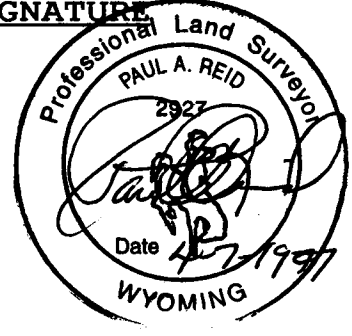
Date of Field Work: 2, March, 1994 Office Reference: EXXON Looseleaf, Pg. 57A

**CROSS INDEX DIAGRAM**

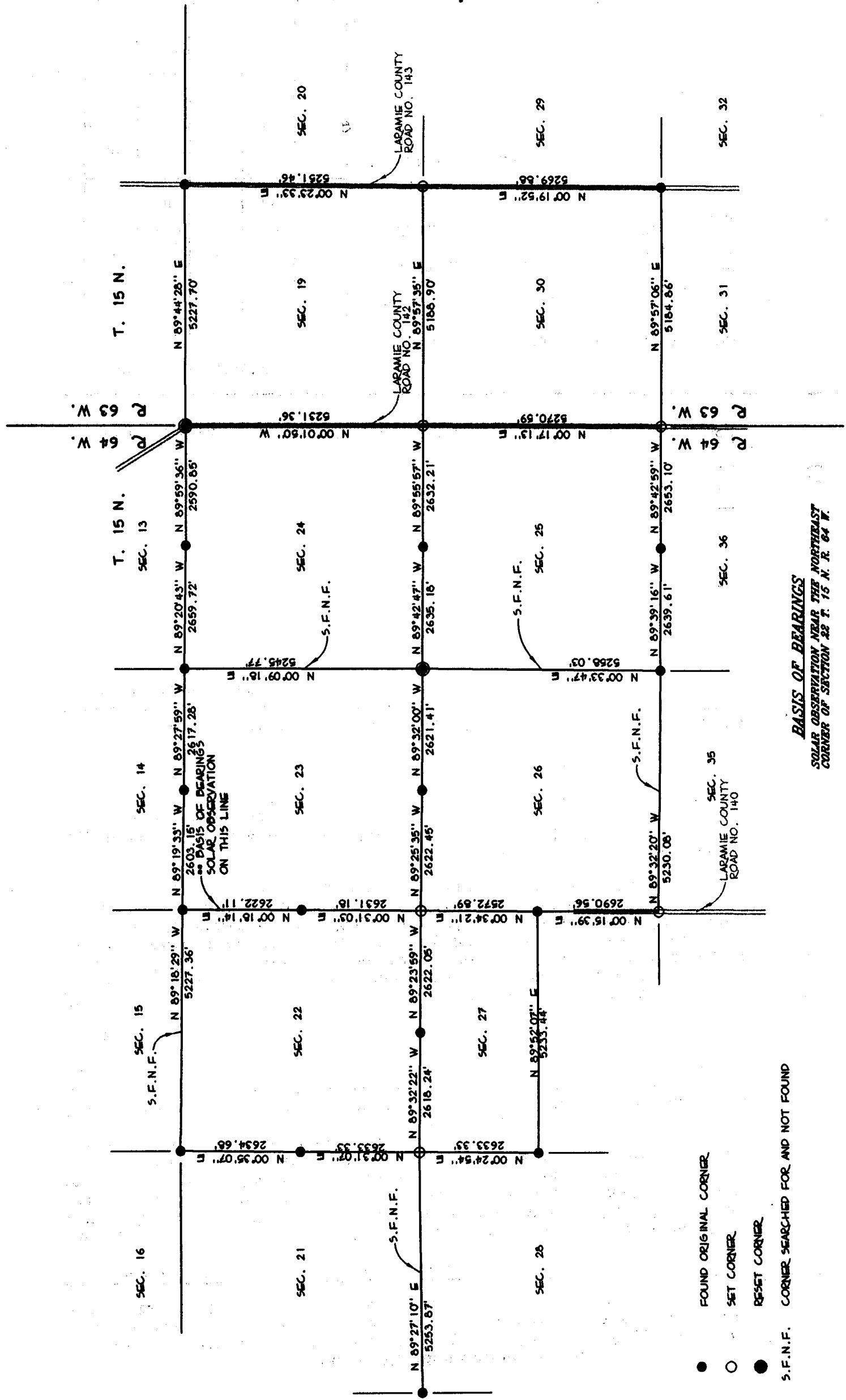
1	2	3	4	5	6	7	8	9	10	11	12	13	14	15	16	17	18	19	20	21	22	23	24	25	
A																									
B																									
C	6		5		4		3		2		1														
D																									
E																									
F																									
G	7		8		9		10		11		12														
H																									
I																									
J																									
K																									
L	18		17		16		15		14		13														
M																									
N																									
O																									
P	19		20		21		22		23		24														
Q																									
R																									
S																									
T	30		29		28		27		26		25														
U																									
V																									
W																									
X	31		32		33		34		35		36														
Y																									
Z																									

Firm/Agency, Address  
Paul A. Reid, A.V.I.p.c.  
2035 Westland Road  
Cheyenne, WY 82001  
  
Telephone Number:  
(307)-634-6017

This corner record was prepared by me or under my direction and supervision.  
**SEAL & SIGNATURE**



Corner Name: NE Cor. Section: 25 T T 15N R 64W; 6TH P.M. Cross-Index No.: R-25



- FOUND ORIGINAL CORNER
- SET CORNER
- RESET CORNER
- S.F.N.F. CORNER SEARCHED FOR AND NOT FOUND

**BASIS OF BEARINGS**  
 SOLAR OBSERVATION NEAR THE NORTHEAST  
 CORNER OF SECTION 22 T. 15 N. R. 64 W.